

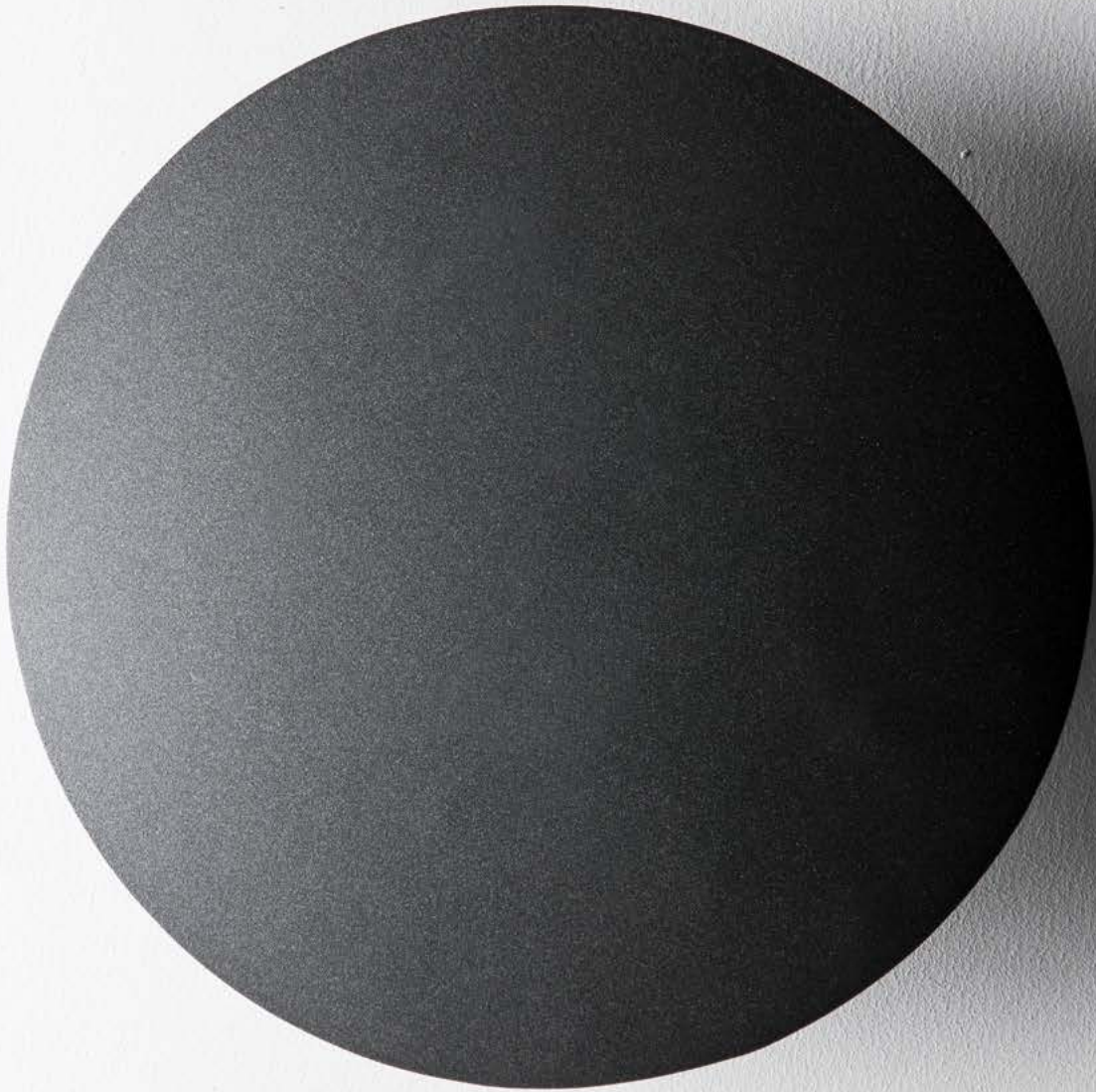


IRIS & SHELL



EUREKA

3443 & 3444



IRIS 3443



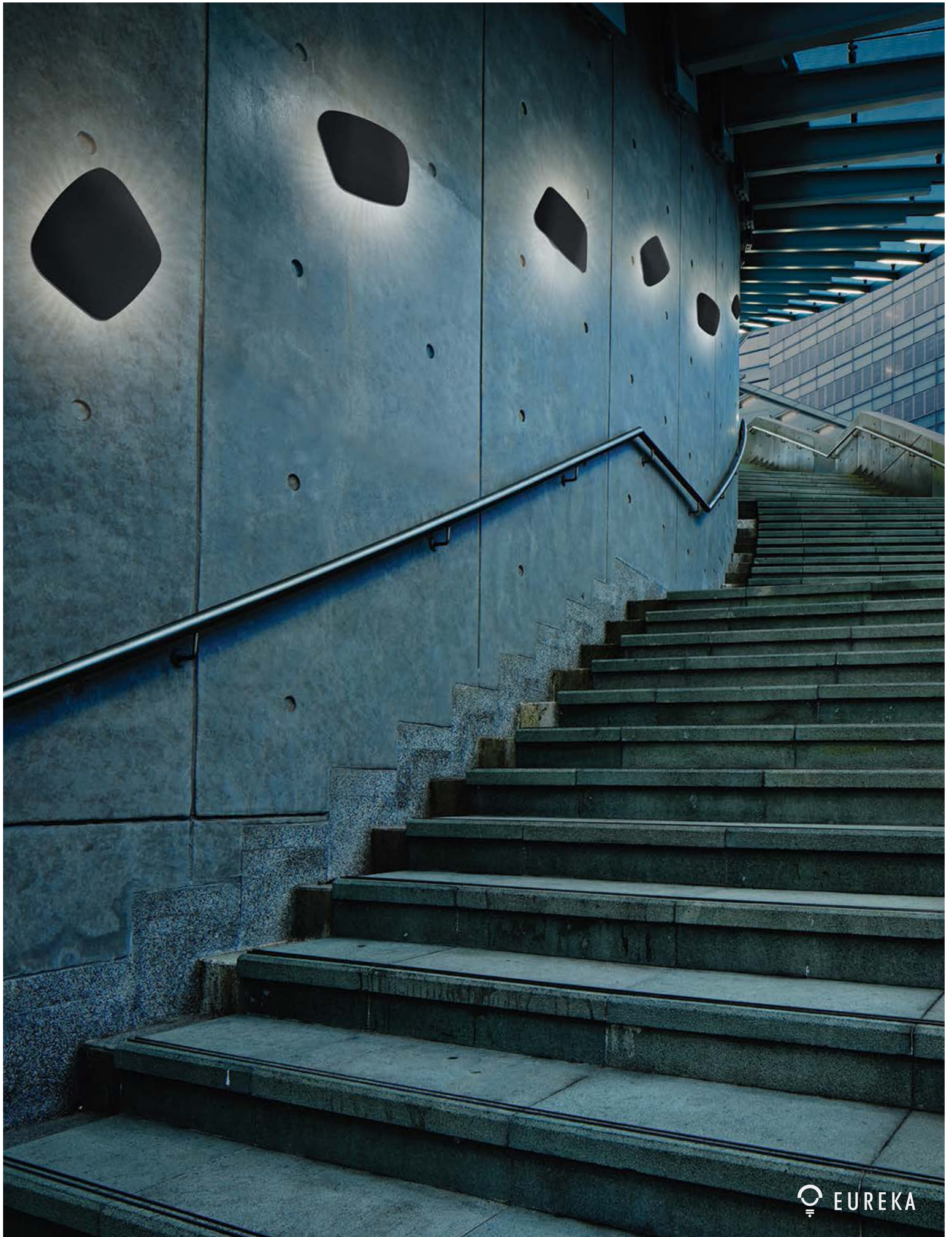


SHELL 3444

“ The Iris is a softly curved and crisp shape which belies its thick underside. The minimal form provides accent illumination which applies for any indoor or outdoor environment. ”







“ The form of the Shell was conceived with curved lines so as to optimally blend within a luminaire pattern or surrounding elements of space. ”



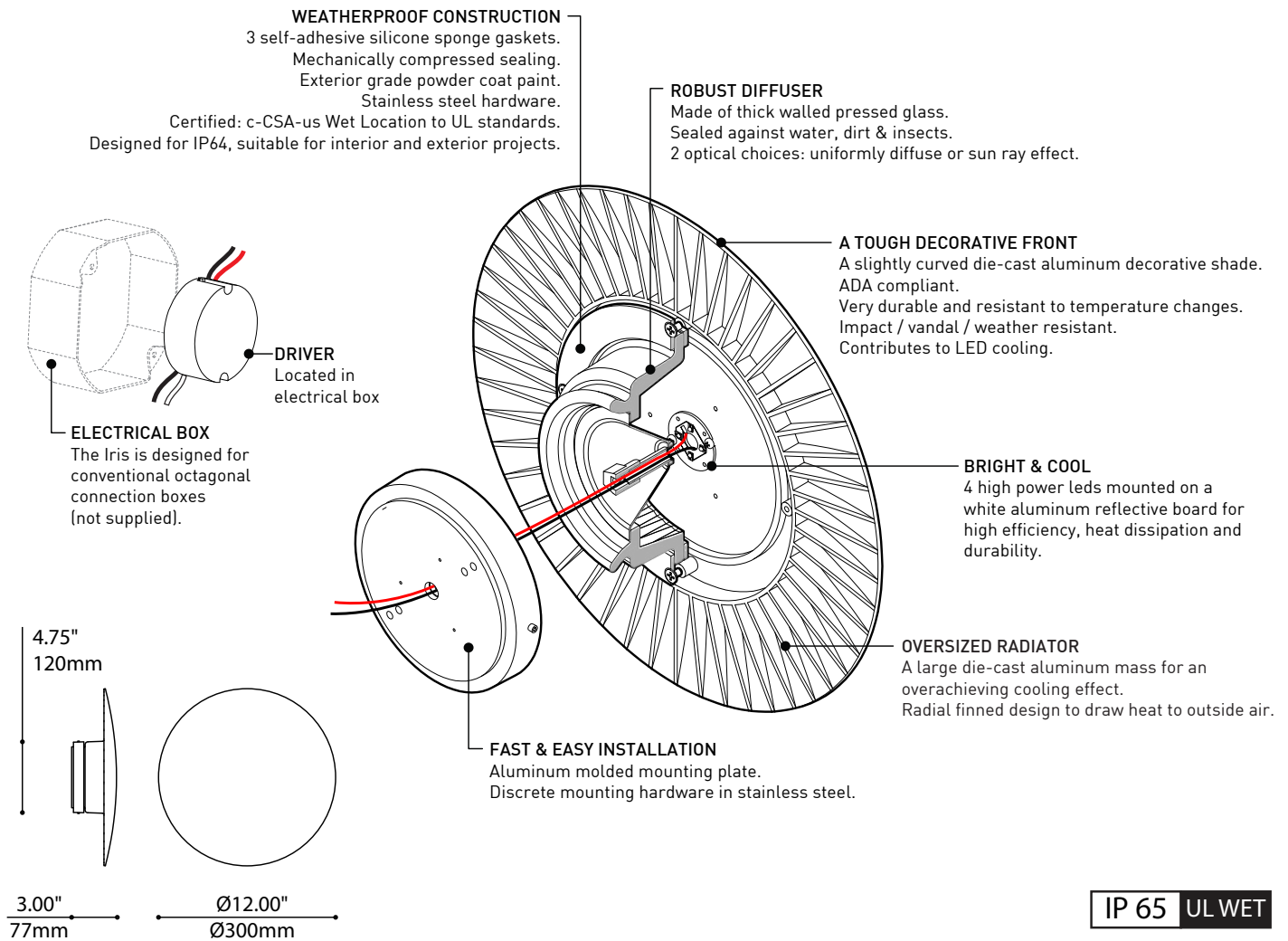


*soft*  
GLOW

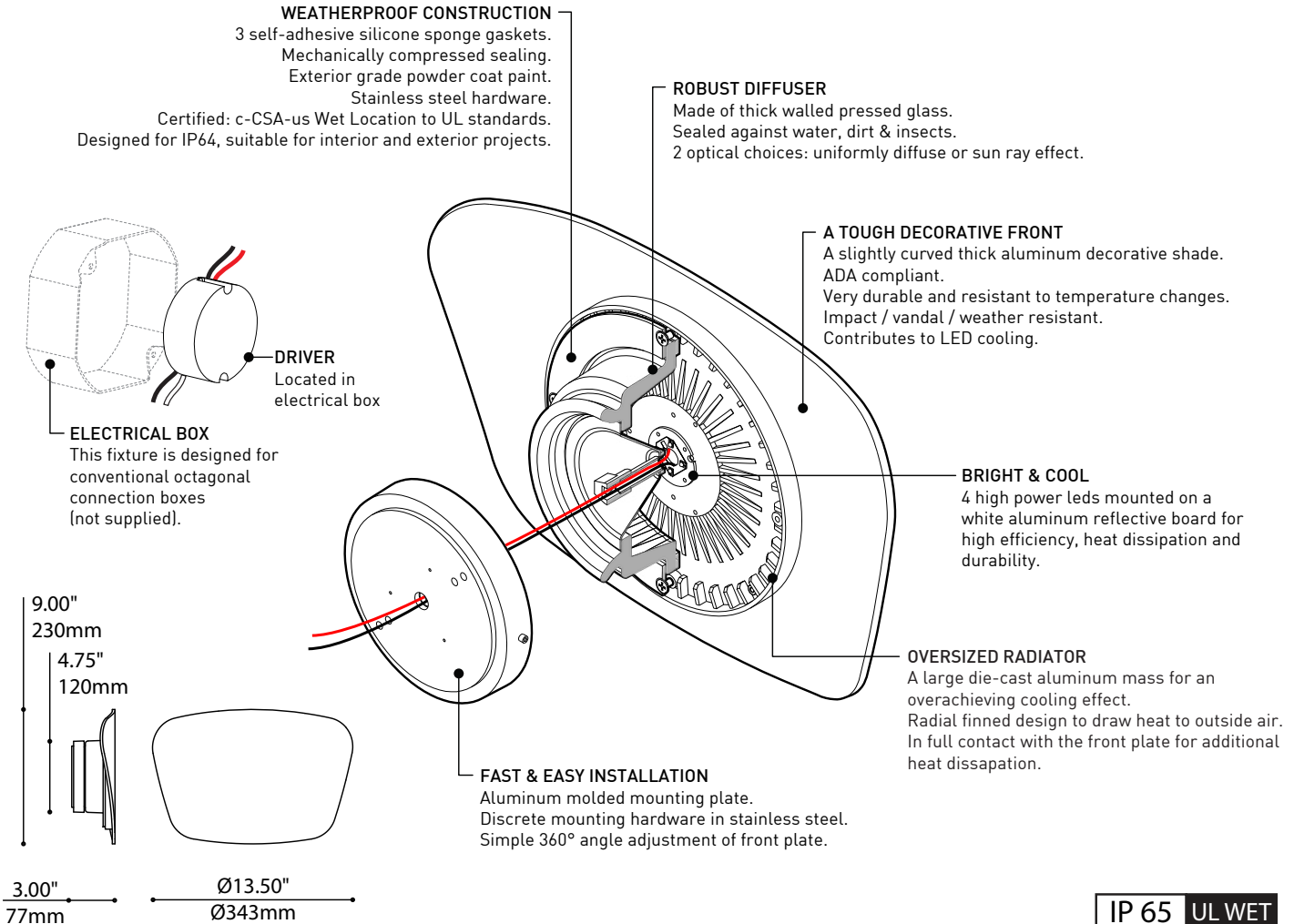


RADIATING  
*rays*





SPECIFICATIONS	4W DEL	8W DEL
LIGHT SOURCE	4 x high powered Nichia LEDs on MCPCB - total ±4 w	4 x high powered Nichia LEDs on MCPCB - total ±8 w
MODULE	UL recognized - made in USA	
DELIVERED LUMENS (ESTIMATION)	231 lm (3000K) / 242 lm (4000K)	364 lm (3000K) / 375 lm (4000K)
CRI	80 (3000K & 4000K)	
ROHS	Compliant	
STRUCTURE	Die-cast Aluminum	
HEAT MANAGEMENT	Die-cast Aluminium, integrated with the light module	
DIFFUSER	Pressed glass offered in 2 options: Uniformly diffuse or Sun ray effect	
GASKETS	Die-cut self-adhesive silicone gaskets (minimum 3,2mm thickness)	
LIGHT DISTRIBUTION	Indirect	
VOLTAGE	120-277V	120V
DRIVER	Constant Current driver 350mA, UL Recognized	Constant Current driver 700mA, UL Recognized
DIMMING	N / A	N / A
LM-79	In process	
WARRANTY	5 years	



**IP 65 UL WET**

SPECIFICATIONS	4W DEL	8W DEL
LIGHT SOURCE	4 x high powered Nichia LEDs on MCPCB - total ±4 w	4 x high powered Nichia LEDs on MCPCB - total ±8 w
MODULE	UL recognized - made in USA	
DELIVERED LUMENS (ESTIMATION)	211 lm (3000K) / 222 lm (4000K)	338 lm (3000K) / 350 lm (4000K)
CRI	180 (3000K & 4000K)	
ROHS	Compliant	
STRUCTURE	Die-cast Aluminum	
HEAT MANAGEMENT	Die-cast Aluminium, integrated with the light module	
DIFFUSER	Pressed glass offered in 2 options: Uniformly diffuse or Sun ray effect	
GASKETS	Die-cut self-adhesive silicone gasket (minimum 3,2mm thickness)	
LIGHT DISTRIBUTION	Indirect	
VOLTAGE	120-277V	120V
DRIVER	Constant Current driver 350mA, UL Recognized	Constant Current driver 700mA, UL Recognized
DIMMING	N / A	N / A
LM-79	In process	
WARRANTY	5 years	

# Photometric report

## Iris

3443-LED308-ANTE-CLR  
8w LED Clear diffuser

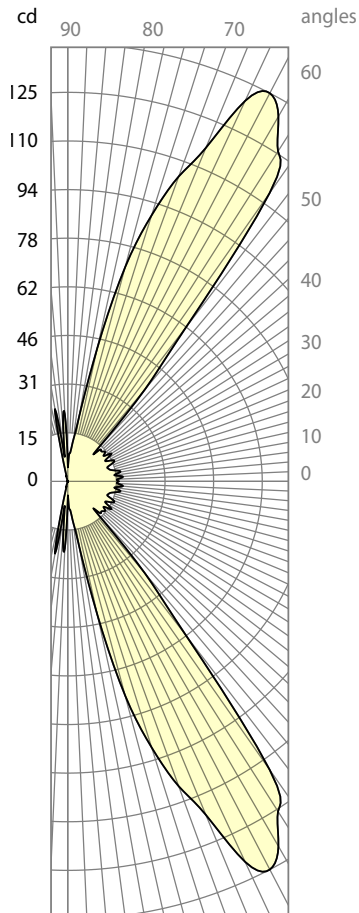
Initial lumens (lm):	800
Delivered lumens (lm):	364
Input watts (W):	11.4
Number of LED's:	4
Lumens per LED:	200
Distribution:	Direct-Indirect
Efficiency (%):	46.3%
Efficacy (lm/W):	31.9
Photometric type	C

### Luminous dimensions

Luminous shape:	Rectangle
Units:	in (mm)
0-180 Axis:	12 (343)
90-270 Axis:	12 (220)
Height:	2.6 (65)

### Luminaire spacing criteria

2 luminaires, plane 0:	4.49
2 luminaires, plane 90:	4.49
4 luminaires:	4.11



90 - 270

## Shell

3444-LED304-ANTE-FRO  
4w LED Frosted diffuser

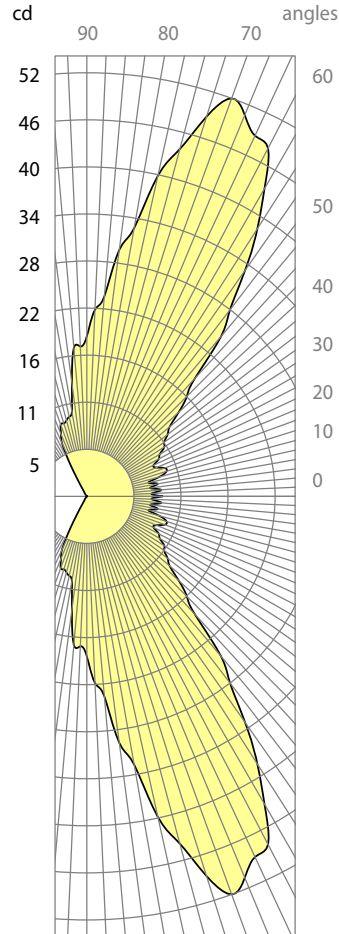
CCT (K):	3000
Initial lumens (lm):	500
Delivered lumens (lm):	200
Input watts (W):	5.4
Number of LED's:	4
Lumens per LED:	125
Distribution:	Direct-Indirect
Efficiency (%):	40.2%
Efficacy (lm/W):	37.04
Photometric type	C

### Luminous dimensions

Luminous shape:	Rectangle
Units:	in (mm)
0-180 Axis:	13.5 (343)
90-270 Axis:	8.66 (220)
Height:	2.8 (71)

### Luminaire spacing criteria

2 luminaires, plane 0:	3.84
2 luminaires, plane 90:	3.36
4 luminaires:	3.78

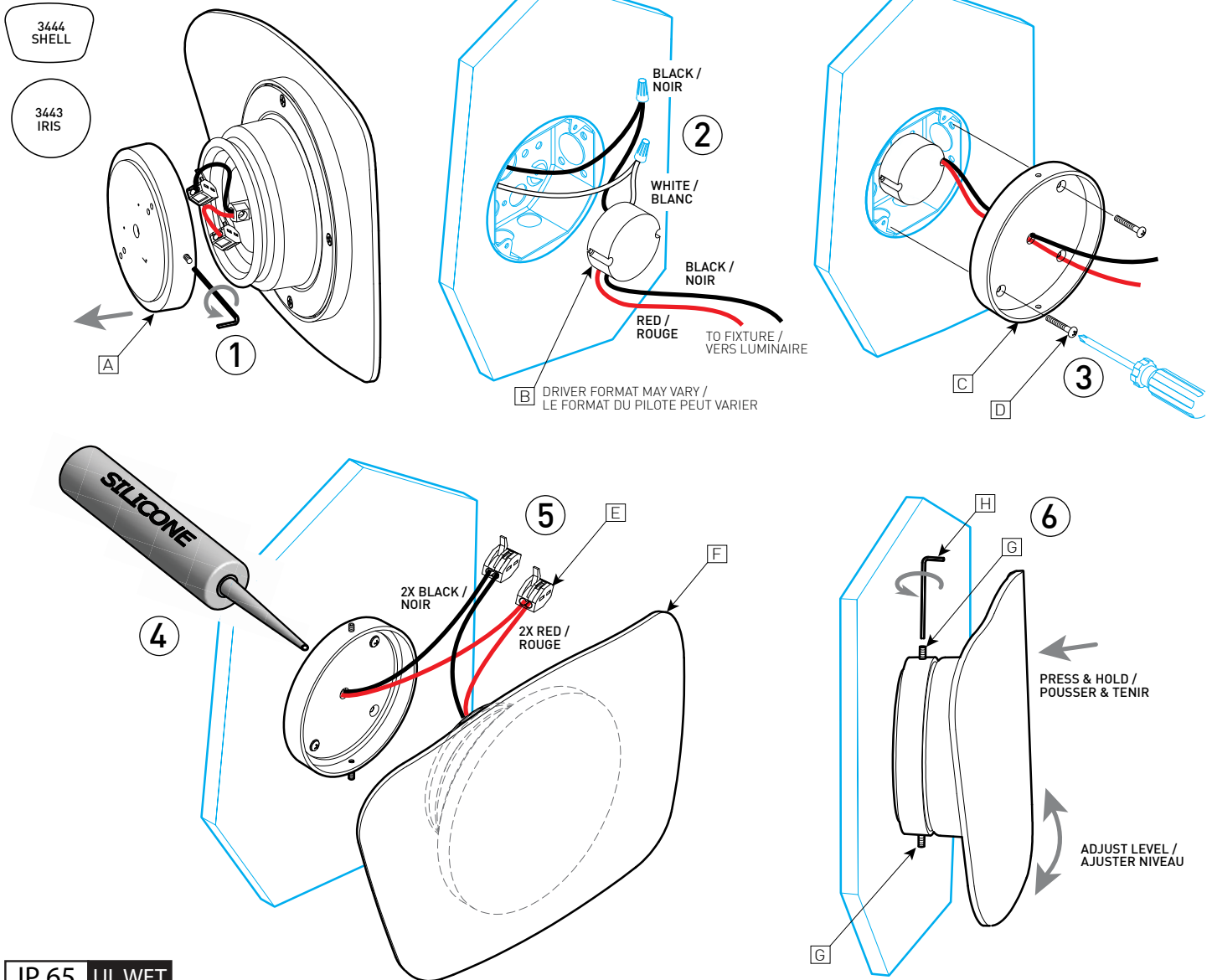


0 - 180



# Installation Instructions

2 LUMINAIRE SHAPES /  
2 FORMES DE LUMINAIRES



IP 65 UL WET

## INSTALLATION

- 1 - REMOVE BACKPLATE [A]
- 2 - CONNECT WIRES AND INSERT DRIVER [B] IN JUNCTION BOX (not supplied).
- 3 - INSTALL THE BACKPLATE [A] TO JUNCTION BOX USING 2 SCREWS [D] (ALIGN SET SCREW VERTICALLY IF POSSIBLE).
- 4 - FILL ANY GAPS BETWEEN WALL AND BACKPLATE [A] WITH SILICONE CAULKING (not supplied).
- 5 - CONNECT FIXTURE [F] WIRES TO QUICK CONNECTS [E] WITH MATCHING COLOR.
- 6 - PLACE WIRES INTO FIXTURE [F] & PUSH FIXTURE IN BACKPLATE, ADJUST LEVELLING, PUSH FIXTURE TO COMPRESS GASKET & TIGHTEN 2 SET SCREWS [G] WITH 2MM (9/64") HEX TOOL [H].

## MAINTENANCE

FOR INFORMATION ABOUT LED OR DRIVER REPLACEMENT: PLEASE CONTACT YOUR EUREKA AGENT

## INSTALLATION

- 1 - ENLEVER LA PLAQUE RONDE [A].
- 2 - CONNECTER LES FILS DU PILOTE [B] ET L'INSÉRER DANS LA BOÎTE DE CONNEXION (non fournie).
- 3 - FIXER LA PLAQUE RONDE [A] À LA BOÎTE DE CONNEXION À L'AIDE DE DEUX VIS [D] (SI POSSIBLE ALIGNER VERTICALEMENT LES VISSÉS DE PRESSIION).
- 4 - REMPLIR DE SILICONE (non fournie) TOUTE OUVERTURE ENTRE LE MUR ET LA PLAQUE RONDE [A].
- 5 - CONNECTER LES FILS DU LUMINAIRE [F] AU RACCORD RAPIDES [E] AVEC FIL DE COULEUR CORRESPONDANTE.
- 6 - POUSSER LES FILS DANS LE LUMINAIRE & INSÉRER DANS LA PLAQUE RONDE, AJUSTER LE NIVEAU SI BESOIN, PRESSER LE LUMINAIRE & SERRER LES VISSÉS DE PRESSIION [G] AVEC LA CLÉ HEXAGONALE 2MM (9/64") [H].

## MAINTENANCE

POUR LES INFORMATIONS RELIÉES AU REMPLACEMENT DES DEL OU DES PILOTES: VEUILLEZ CONTACTER VOTRE AGENT EUREKA

